

■ **PUBLISHER:** Acorah Software Products Ltd ■ **WEBSITE:** www.taxcalc.com
 ■ **SUPPORT:** www.taxcalc.com/support/ ■ **SYSTEM REQUIREMENTS:** Windows 2000/XP,
 Internet Access ■ **LIMITATIONS:** None, full version (for individuals earning under £30,000)

Complete your tax return

TaxCalc Lite makes this job a whole lot easier than usual

Tax: it's nobody's favourite word, subject or task, but it's something that impacts on all our lives, some more so than others. Here at **PCAnswers** we're always try to bring you the most straightforward solution to everyday PC jobs and activities. We can honestly say that filling in an online tax form is one of the less riveting things that you can do with your PC. Still, it's a subject that can be easily addressed in this modern age.

If you're self-employed or have to manually fill out your tax returns, then you'll know how much of a chore it can be. This isn't helped by the overly complex nature of HMRC's (HM Revenue and Customs) tax forms. Fear not, though: help is at hand. The *TaxCalc 2007* product range from Acorah is the most comprehensive and simple tax software on the market.

The program takes its users beyond the tax man's jargon and makes it possible for anyone, regardless of their tax and accounting knowledge, to calculate the amount of tax that they have to pay and complete their tax return. Those people who don't have a tax return can still check whether they're due a refund.

By completing the SimpleStep questionnaire, *TaxCalc* users can calculate their tax liability calculations, from capital gains tax to company car tax, before they send their completed return to HMRC. The advantage of *TaxCalc* is that while the complicated HMRC form asks taxpayers for answers, the *TaxCalc* SimpleStep questionnaire prompts for your information and then provides the solution for you.

Filling the forms

TaxCalc Lite is configured for individual Tax Returns. Upon launching the application you'll need to select the "Individual Return SA100" form. Now, unless



REGISTER NOW

To install and run this application you'll first need to register with a valid email address at the following URL: www.taxcalc.com/FutureMags.

you've used *TaxCalc* before, you'll need to start a new entry. Click "Create a New Tax Return". If you're part of that rare breed and consider yourself tax savvy, want to quickly fill in the form from one interface and then quickly submit the details, select the regular HMRC Forms option. If tax lingo isn't your forte then taking the SimpleStep approach is the best way forward.

You're now presented with two options: Online filing or Paper filing. If you have internet access and want to submit your data via the Web then you'll need to highlight this radio option and then read about setting up a Tax Return online account. Once you've registered your account, enter the username and password and continue with your tax process.

Error checking

Filling out the forms is easy with the help of the SimpleStep system. In no time at all you'll have filled out your tax return with minimum fuss and bother. Once you're happy and have completed the relative parts, click "You have finished". From this page you can have *TaxCalc* check your full document for errors or inconsistencies. When all entries are complete you can click Finish to view the results and possible ways of filing your finalised tax return – online is the most obvious of methods.

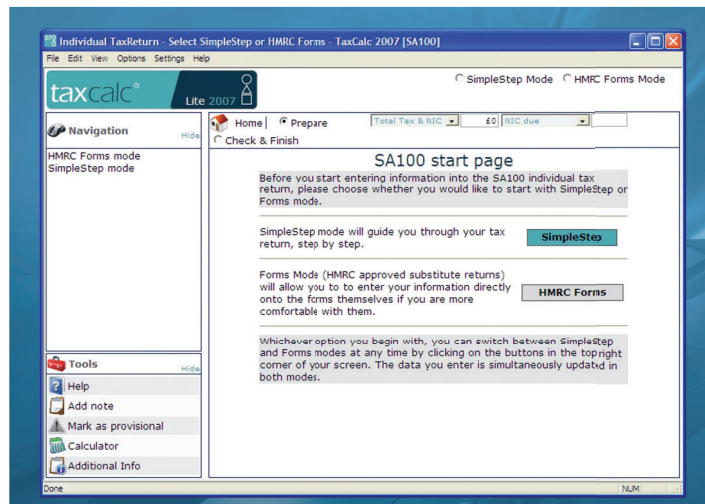
The tax system will never be quick or fun. However, *TaxCalc* offers a time-saving and straightforward alternative to the traditional, tedious form-filling method that's not only a long process, but very complex.

Software must be registered by 23rd November, 2007

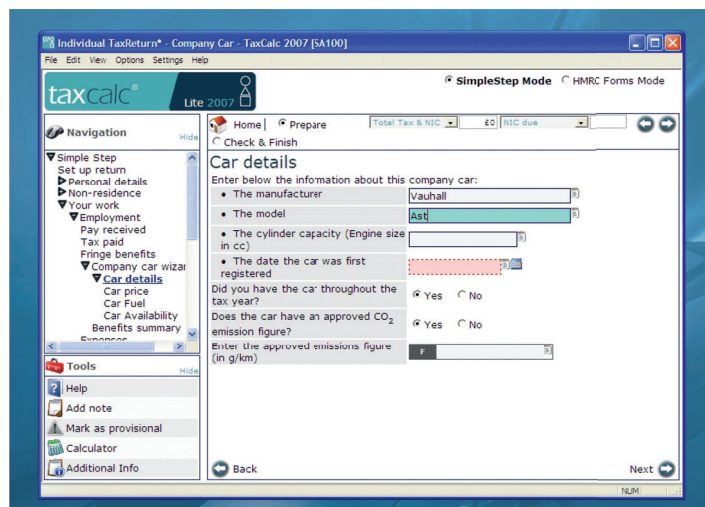
Automate the tax form process



1 Starting up *TaxCalc* presents you with the Welcome page. This section contain basic information and handy tips. Because this is the Individual Return edition you need to click that form at the top left of the menu.



2 After starting a new form you're given the option of an automated or manual process. The Automated service is recommended because it's faster and easier to use. To do this click the SimpleStep button.



3 Now it's all down to you. Enter your details and when you've completed a section click Next. The Tax Return system is a fairly long one; however, it's an essential part of life. So get it out of the way fast with *TaxCalc*.

YOUR DISC